

SUBJECT: MONMOUTHSHIRE INTERGRATED YOUTH OFFER ANNUAL REPORT

MEETING: Children and Young People Select

DATE: 2nd November 2015

DIVISION/WARDS AFFECTED: ALL

1. PURPOSE:

To present to the Children and Young People's Select Committee the Annual Report on progress and achievements made by Monmouthshire's Integrated Youth Offer group.

2. RECOMMENDATIONS:

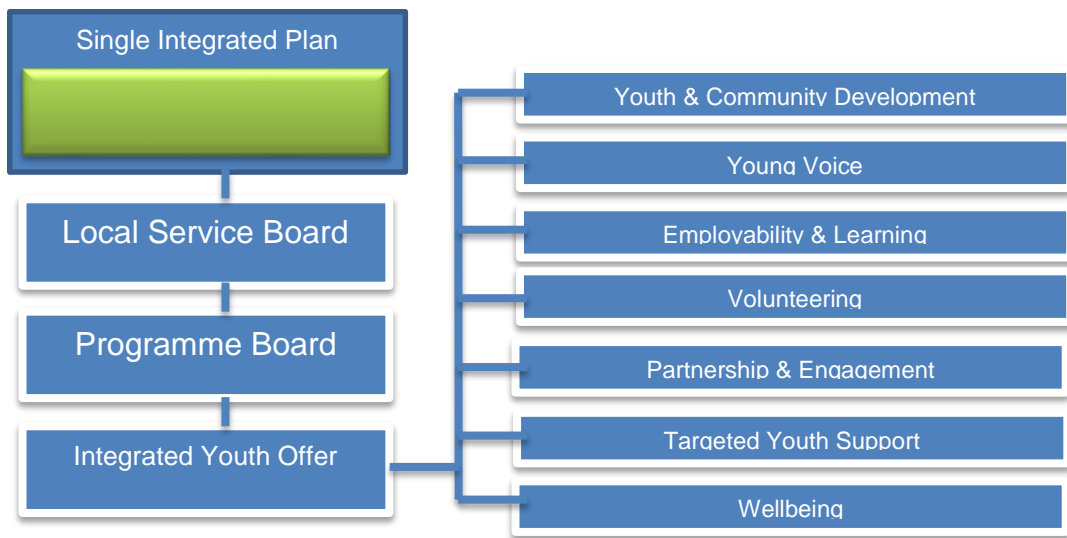
That Members scrutinise the Annual Report of the Monmouthshire Integrated Youth Offer Group (Appendix 2) and challenge the group on its performance in delivering measurable outcomes to young people.

3. KEY ISSUES:

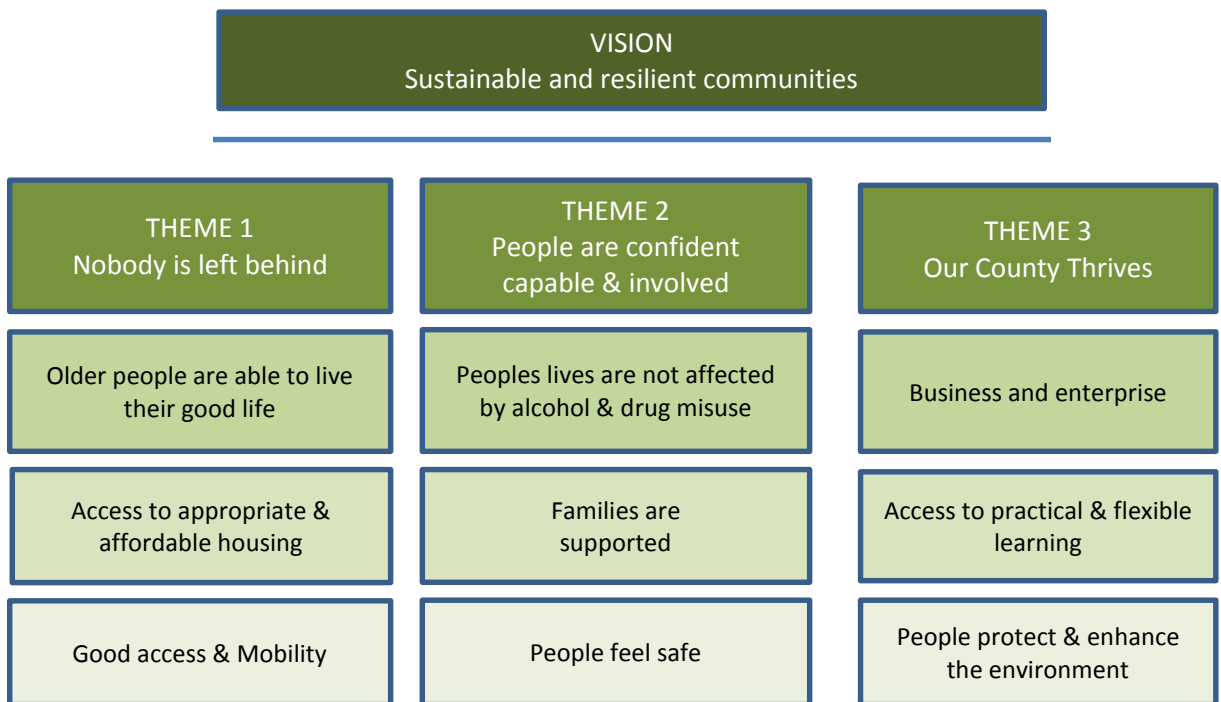
3.1 The Integrated Youth Offer has been bestowed the formal delegation of Youth Support Services by the Local Service Board.

3.2 The Integrated Youth Offer has clear governance and reporting structures in place through the LSB Programme Board.

3.3 The current structure within Monmouthshire is depicted in the diagram below indicating the governance of the Integrated Youth Offer Group.



3.4 The 7 operational subgroups work well to implement the vision of the LSB and the priorities of the Single Integrated Plan as set out below.



3.5 The continued work of the Integrated Youth Offer group has led to reduced duplication and improved focused delivery of services to young people.

3.6 Key findings from the mapping exercise carried out in the summer of 2014 have been analysed and used to inform priorities and develop future work programmes.

3.7 Collectively all youth support services as part of the IYO have worked with 14,500* young people between the ages of 11-25 in 14/15.

3.8 The IYO has clear Safeguarding protocols and hold a database of all members of IYO group for DBS clearance that is current and valid.

3.9 The IYO has gathered intelligence from partners to feed into the Single Integrated Plan to provide clear evidence on outcomes achieved.

3.10 Both Chief Officer and Cabinet Member for Children and Young People attend and receive information quarterly on the work of the Integrated Youth Offer.

*This is not 100% representative of individual young people as some agencies do work with the same young people

4. REASONS:

4.1 Our purpose is to ensure that **all** young people in the County continue to have access to Youth Support Services and that despite the budget pressures these life enriching services are not lost.

4.2 Sustained current provision is vital to the well-being, social and personal development and future prospects of young people in Monmouthshire.

4.3 The Welsh Government's National Youth Service Strategy; Engagement and Progression Framework and Families First programme, opens the way for the contribution of youth work organisations to be better connected with broader support services available to young people. All strategies realise the contribution to the lives and futures of young people across Wales and to our Welsh economy.

4.4 To collectively ensure effective use of resources in the current financial climate.

5. RESOURCE IMPLICATIONS:

5.1 No cost implications to MCC

6. SUSTAINABLE DEVELOPMENT AND EQUALITY IMPLICATIONS:

There are no current direct impacts to young people as identified in the equalities assessment (Appendix 1). The Integrated Youth Offer will continue to sustain services available to young people in Monmouthshire through collaboration and resources available. Good service awareness allows us to ensure effective use of service delivery; be aware of services lifespan and when services are reduced/lose funding to seek alternatives to ensure young people are not disadvantaged

The impacts from this report's priorities will be reviewed every 2 years and criteria for monitoring and review will include:

7. SAFEGUARDING AND CORPORATE PARENTING IMPLICATIONS

7.1 The report outlines the Integrated Youth Offer Group commitment to continuing youth support services to young people, in order for them to remain accessible, safe, available and relevant to the young people of Monmouthshire

8. CONSULTEES:

8.1 LSB Partnership Manager

8.2 Youth Service Manager

8.3 Youth Support Services across Monmouthshire

9. BACKGROUND PAPERS:

Appendix 1 Please see attached 2014 – 2015 Annual Report of Integrated Youth Offer

10. AUTHOR:

Tracey Thomas, Youth Service Manager

11. CONTACT DETAILS:

Tel: 01873 833200

E-mail: traceythomas@monmouthshire.gov.uk

The “Equality Initial Challenge”

Appendix 1

Name: Tracey Thomas Service area: CYP, Youth Service – Integrated Youth Offer Date completed: 27 th July 2015		Please give a brief description of what you are aiming to do. To continue to sustain youth support services across Monmouthshire to young people aged 11-25 through collaboration with statutory, voluntary, third and private sectors.	
Protected characteristic	Potential Negative impact Please give details	Potential Neutral impact Please give details	Potential Positive Impact Please give details
Age		X Continual monitoring of youth support services available to young people will determine any future changes to service delivery and therefore could change the EQIA impact measure	
Disability		X Continual monitoring of youth support services available to young people will determine any future changes to service delivery and therefore could change the EQIA impact measure	
Marriage + Civil Partnership		X Continual monitoring of youth support services available to young people will determine any future changes to service delivery and therefore could change the EQIA impact measure	
Pregnancy and maternity		X Continual monitoring of youth support services available to young	

		people will determine any future changes to service delivery and therefore could change the EQIA impact measure	
Race		X Continual monitoring of youth support services available to young people will determine any future changes to service delivery and therefore could change the EQIA impact measure	
Religion or Belief		X Continual monitoring of youth support services available to young people will determine any future changes to service delivery and therefore could change the EQIA impact measure	
Sex (was Gender)		X Continual monitoring of youth support services available to young people will determine any future changes to service delivery and therefore could change the EQIA impact measure	
Sexual Orientation		X Continual monitoring of youth support services available to young people will determine any future changes to service delivery and therefore could change the EQIA impact measure	
Transgender		X Continual monitoring of youth support services available to young people will determine any future	

		changes to service delivery and therefore could change the EQIA impact measure	
Welsh Language		X Continual monitoring of youth support services available to young people will determine any future changes to service delivery and therefore could change the EQIA impact measure	

Please give details about any potential negative Impacts .	How do you propose to MITIGATE these negative impacts
➤	➤
➤	➤
➤	➤
➤	➤

Signed

Designation Youth Service Manager

Dated 27th July 2015

EQUALITY IMPACT ASSESSMENT FORM

What are you impact assessing	Service area
The youth support services that are currently available to young people in Monmouthshire within resources allocated	CYP
Policy author / service lead	Name of assessor and date
Tracey Thomas	

1. What are you proposing to do?

The Integrated Youth Offer seeks to sustain services available to young people in Monmouthshire through collaboration and resources available. Through mapping and awareness of all services purpose and offer available to young people we are able to ensure effective use of delivery; be aware of services lifespan and when services are reduced/lose funding to seek alternatives to ensure young people are not disadvantaged.

2. Are your proposals going to affect any people or groups of people with protected characteristics in a **negative** way? If **YES** please tick appropriate boxes below.

Age		Race	
Disability		Religion or Belief	
Gender reassignment		Sex	
Marriage or civil partnership		Sexual Orientation	
Pregnancy and maternity		Welsh Language	

3. Please give details of the negative impact

There should be no negative impact on the protected characteristics above as all services will remain operational for as long as the Integrated Youth Offer can sustain them within the resources and budgets sourced.

4. Did you take any actions to mitigate your proposal? Please give details below including any consultation or engagement.

There is no proposed change to service delivery currently so no consultation or engagement carried out to date, however as part of our ethos when working with young people we consult with them regularly to ensure that current delivery is what young people require.

5. Please list the data that has been used to develop this proposal? eg Household survey data, Welsh Govt data, ONS data, MCC service

user data, Staff personnel data etc..

Members of the Integrated Youth Offer and individual services data (MCC Youth Service; Youth Offending Service; Leisure; Education; Families First; Young Carers; Police; Scouts; Young Farmers; Menter Iaith; Housing;)

Signed... *G. House*Designation...**Youth Service Manager**.....Dated...27-07-15.....